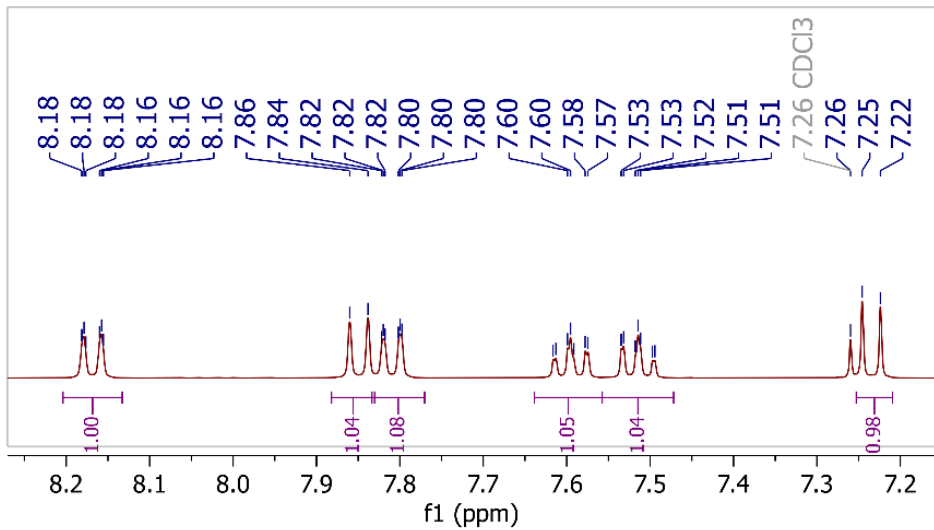


2

^1H , 400 MHz, CDCl_3

8.18
8.18
8.18
8.16
8.16
8.16
7.86
7.84
7.82
7.82
7.82
7.80
7.80
7.80
7.62
7.61
7.60
7.60
7.59
7.58
7.57
7.53
7.53
7.52
7.51
7.51
7.50
7.49
7.26 CDCl_3
7.26
7.25
7.22



—2.45

—1.55 H_2O

—1.26

10.0
9.5
9.0
8.5
8.0
7.5
7.0
6.5
6.0
5.5
5.0
4.5
4.0
3.5
3.0
2.5
2.0
1.5
1.0
0.5
0.0

1.00
1.04
1.08
1.05
1.04
0.98

3.14

f1 (ppm)